



SALE | RENTAL | ERECTION

شركة الباطن المتقدمة للمقاولات المحدودة
Al Batin Advanced Contracting Co. Ltd.

www.albatinindus.com

Table of
CONTENTS

Page
NO.

1. About Us	01
2. Vision	02
3. Our Mission Statement	02
4. Scaffolding Material Sale/Rental	03
5. Erection	04
6. Support Services	06
7. Quality Policy	07
8. Gallery	08
9. Al Batin Scaffolding Fittings	10
10. A B Scaffolding GI Tube, LVL, Steel Plank	13
11. A B Cuplock System	14
12. A B Scaffolding Ladder	15
13. A B Form Work Material	16
14. Single Width Scaffold	18
15. Double Width Scaffold	19
16. Al Batin Other Material	20
17. Tools	25

ABOUT US

AL - BATIN ADVANCED CONTRACTING COMPANY LTD based in Al jubail, Saudi Arabia is a fully comprehensive access provider furnishing our client base with the best collaboration of solutions to bring projects in on time and budget. AL-BATIN favour large bespoke projects which are treated as “individual business units”. The unique approach pairs a senior manager with a full time designated project team consisting of secretarial, design, field and management back up. AL-BATIN was founded in 2012 and since that time the company has grown in the breadth of its operations and its capacity to undertake large scale and challenging complexity projects. The sustained growth of the company has been largely funded from its profits being reinvested. The management team at AL-BATIN have been and will always be committed to its continued growth and success. The company’s track record points to a founding vision – offering highest levels of service in the industry, incorporating the most modern and innovative advances in technology backed up with demanding requirements of professional expertise in the workforce. The guiding principle inherent in AL-BATIN vision can be summed up simply. It is to ensure that AL-BATIN clients receive the kind of service that meets and exceeds expectations. This extends not only to the delivery of prime services, but also to the many facets of what the company thinks of as ‘total package’ i.e concern for the wellbeing of our workers, consideration of other contractors on site and AL-BATIN reputation as good corporate and social citizen. The way AL-BATIN performs reflects on the acumen of the company’s clients. Earning the trust of clients and working partners remains as undiminished as the day business began and will continue to be the driving force of our growth.



VISION

Our vision is to make a difference with the perception of our industry through innovation, presentation and our customers' partnership.

OUR MISSION

Our mission is to care for our whole team, our customer and everyone affected by our work.

1. To be efficient, innovative and “best in class” with everything that we do.
2. Our “Delivering Safety First” commitment is at the forefront of our business is at the forefront of our business at all times.
3. To maintain healthy and sustainable profitability.

AL-BATIN ADVANCED CONTRACTING CO.LTD has a proven track record in delivering innovative scaffolding solutions in a creative, cost-effective manner while remaining focused on our top priority – SAFETY. Our commitment to safety has led us to gain qualifications that enable us to work in such safety-critical environments such as Utilities, Railways, Airports, Petrochemical plant and Construction. Renowned for our honest, open-door approach, we maintain a strong working relationship with our clients based on confidence and trust. This is reflected in the high level of repeat business we receive and also the fact that we are approved suppliers to a large number of organizations. Potential clients are welcome to visit our offices and sites by arrangement to see at first hand the way we run our business and meet a few of our satisfied customers. Our commitment to excellence is found in everything we do. When your next scaffolding project demands the highest levels of expertise and reliability there is only one company to remember – AL-BATIN ADVANCED CONTRACTING CO.LTD

SCAFFOLDING MATERIAL SALE/RENTAL



AL-BATIN ADVANCED CONTRACTING CO.LTD creates new heights in the scaffolding material supply service. We provide an appropriate environment to attract & achieve customer satisfaction to provide excellent service efficiently, effectively & transparently, through the application of the concepts of total quality activating a sense of partnership & translate it into reality checks.

We provide comprehensive range of scaffolding materials on rental basis as per the requirement of our Clients. We have committed and dedicated professional staff to ensure our following outstanding services.

- **Scaffolding Tubes & Fittings**
- **Cup lock System Scaffolding**
- **Scaffolding Boards / Planks**



ERECTION

We are Providing work access solutions, including erecting and dismantling scaffolding, scaffolding rental and shoring services, to oil and petrochemical clients, directly and through general contractors. In just eight years, we expanded from a small start-up to a 20-person company that clocked more Than 1 million work hours. Our growth speaks to our quality, productivity and safety - onshore, offshore, Domestic and overseas.

Fast mobilization underpins our operations. With a well-organized, substantial inventory and round-the- Clock availability, we can deliver accurate materials and skilled personnel right away High expectations.

Because many other crafts depend on scaffolding, our work is often the foundation for successful industrial projects. That's one reason we hold ourselves to the highest standards for training and strive to optimize our performance at Every level.

In-house trainers certified by the Scaffold Training Institute provide practical, hands-on instruction that covers Assembly, inspection and other activities required for the proper erection and use of scaffolding. We make sure that Everyone understands how to identify and control risks and comply with correct safety standards.

We also provide comprehensive pre-planning. Because our management team comprises skilled problem-solvers with more than 8 years of field scaffolding experience, they understand how to best accomplish each job and would never take the Kinds of short-cuts that could increase risk.



SERVICES

Timely and dependable.

Our entire team – from helpers to our most experienced foremen and supervisors – shares a commitment to Excellence. We will help you plan, erection and dismantle the most appropriate cup lock, pin lock and Tube and couplers solution for your project, on time and within your budget. And whether your requirements are better met By purchasing or renting materials, we'll deliver your scaffolding and mobilize labor in as little as a day. Our size, Agility and expanding inventory mean we can efficiently complete jobs of any scope. Our Quantify system simplifies Rental inventory deployment and lets us share real-time data with you.

Industrial Scaffolding Services for

- Plant maintenance, modifications and upgrades
- Outages, shutdowns and turnarounds
- Protective coatings
- Industrial insulation
- Capital projects

SAFETY

Unrivalled safety performance.

Safety is embedded in our culture. The Scaffolding work for our safety commitment is rigorous Employee training reinforced by daily safety audits. We set firm expectations and teach our workforce how to achieve Them. Our work-site safety program is more strenuous than OSHA regulations or the typical requirements of our Customers.



SUPPORT SERVICES

AL-BATIN ADVANCED CONTRACTING CO.LTD is not just a full-service scaffolding solutions provider. We also have a wide range of other support services that we offer to our clients. Even if you don't choose us for your scaffolding needs, or your project doesn't require scaffolding and related services, there are still many ways in which AL-BATIN can help you achieve your desired results.

At the same time, if you do choose AL-BATIN for scaffolding, our support services augment these products and solutions, and allow you to gain the benefit of synergy. Working with our team for support services as well as scaffolding saves you time and money, and makes your job site more productive, provides faster project completion, and can greatly enhance safety as well.

To learn more about any of the support services we offer, or any of our products or other solutions, please explore our website. Then, don't hesitate to contact us via our Contact page, and one of our executives will be in touch with you as soon as possible to discuss what AL-BATIN ADVANCED CONTRACTING CO.LTD can do for you!

We're more than just scaffolding at AL-BATIN. We offer a full range of support services and other solutions that can help your project to be completed on time, on budget, in as safe and efficient a manner as possible.

QUALITY POLICY

The company is dedicated to the quality policy that will ensure that its products and services fully meet the requirements of its customers at all times. The goal of the company is to achieve a high level of customer satisfaction at all times. The commitment to implementation of supporting managerial and business operational systems is essential to realizing that goal.

AL-BATIN ADVANCED CONTRACTING CO.LTD believes in the concept of client and supplier working together in pursuing this policy and in continually striving for improvements in service quality. We believe in the constant vigilance of health and safety to our staff and clients.

The quality policy is based on the following principles;
Ensuring that we fully identify and conform to the needs of our clients. Everyone understanding how to do their job in the right manner and ensuring the job is completed correctly the first time.

Looking at our service provision processes, identifying the potential for errors and taking the necessary action to eliminate them.

Ensuring that health and safety is adhered to at all times.
To ensure that the policy is successfully implemented, staff will be responsible for identifying customer requirements, and ensuring that the correct procedures are followed to meet those requirements. Objectives needed to ensure that the requirements of this policy are met and that the continual improvement is maintained in line with the spirit of the policy, will be set, determined and monitored at Management Review and Appraisals.

The quality policy principles and objectives will be communicated and available to staff at all times. Training will be an integral part of the strategy to achieve the objectives. We are all committed to operating continuously to this standard and we will maintain the necessary Quality Approvals consistent with our customers' requirements.

Our Company will constantly review and improve on our services to ensure tasks are completed in the most effective and timely manner for the benefit of all our customers. We shall ensure that all our personnel understand and fully implement our Company's policies and objectives and are able to perform their duties effectively through our ongoing training and development program.



GALLERY



GALLERY



AL BATIN SCAFFOLDING FITTINGS

All our Scaffolding materials are supply as per International Standards such as BS/EN/AS/NZS



DOUBLE COUPLER

BS1139 Standard Scaffolding Double Coupler, Drop Forged Type. It is Connectors Between Scaffold Tubes. The Double Coupler Is called Fixed Clamp Too.

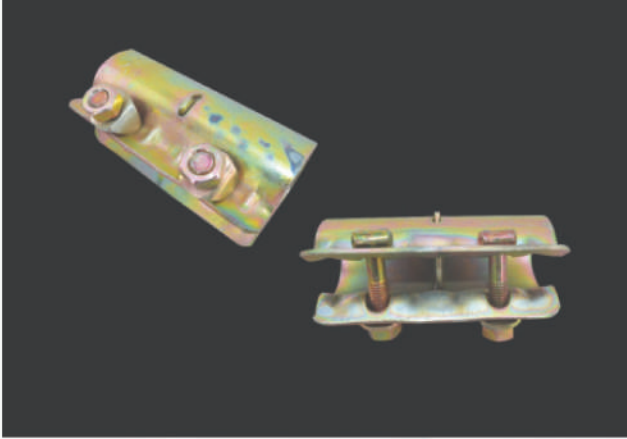
SINGLE COUPLER

Single Coupler is demanded in various industries for linking transoms or putlogs to ledger tubes or props., these couplers are offered to the clients in (EN-74 / BS-1139) standards.



SWIVEL COUPLER

SWIVEL Is Rotated, Connected with Scaffold Tube, O.D 48.3mm of BS1139 or EN39 Standard, In All angles. Comparison of 90 Degree of Right Angle Coupler.

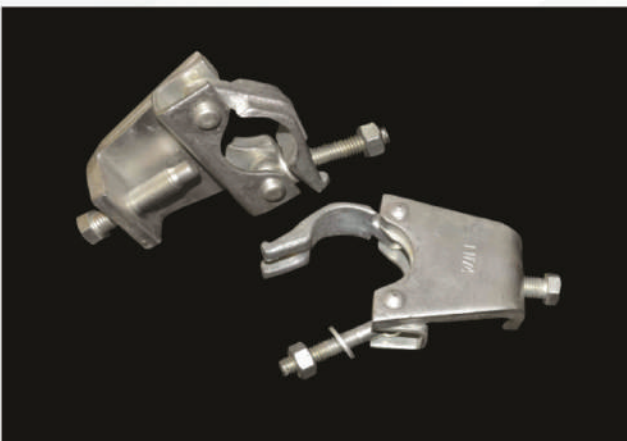
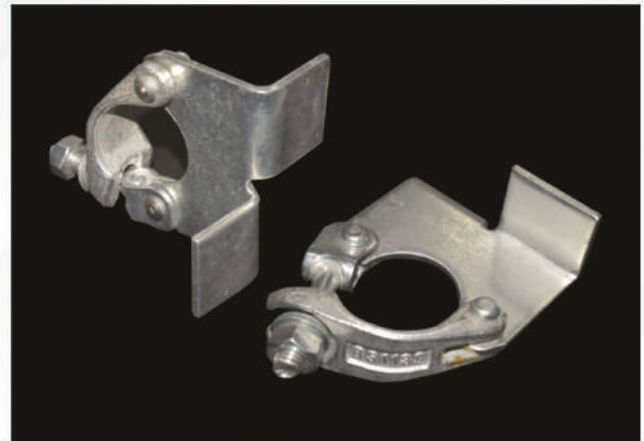


SLEEVE COUPLER

Sleeve Coupler is used to connect with O.D48.3mm scaffolding pipes and tubes horizontal, vertically and braces. It is produces according to European and British standard of EN74 and BS1139.

(BRC) - BOARD RETAINING CLAMP

Scaffold Board Retaining Clamp is a BS1139 Standard Scaffold Fittings. Board retaining clamps are used where secure connection of scaffoldboards to scaffolding is needed



BEAM GIRDER COUPLER

Beam Clamp is a type of BS1139 Scaffold Tube Fittings, A girder coupler is used to connect a girder to a scaffold structure.

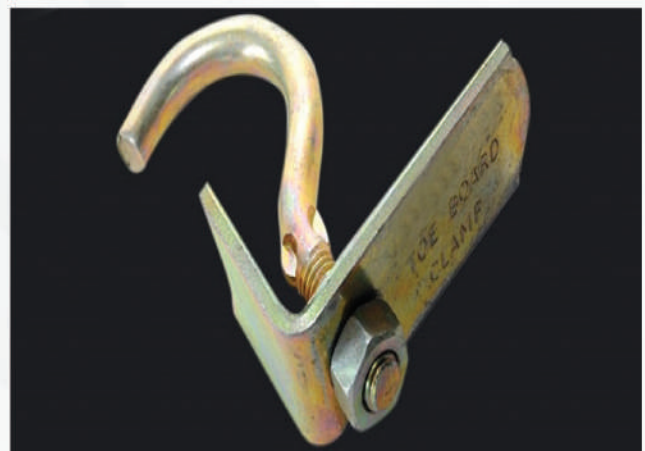


LADDER CLAMP

Scaffold Ladder Clamps Secure Ladders to Scaffold System Tubes. It is conform to BS1139 and EN74 Standard. There are Pressed Steel Type and Drop Forged Type of Scaffolding Ladder Clamps.

TOE BOARD CLAMP

Finish - Plated, Gold Passivated or Powder Coard



UNIVERSAL CLAMP

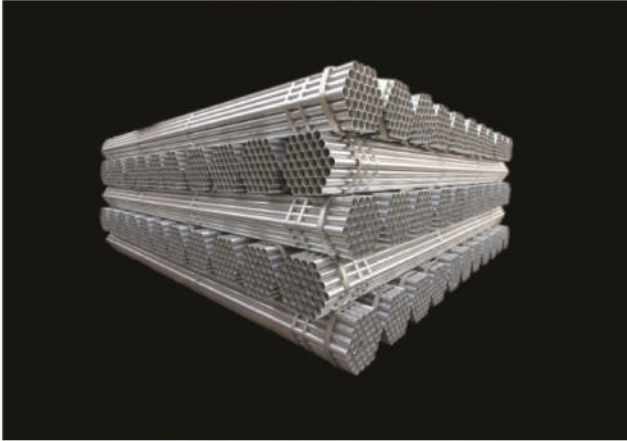
Performs a similar function to the wedge clamps but recommended where forms are to be handled repeatedly or are likely to be subject to considerable vibration.

ROUND CLAMP

Scaffolding Limpet Clamp is a Type of Pressed Steel Scaffolding Pipe Fittings, Used to Fixing Scaffold Boards on Transom Beneath the Boards. Popular Used in Extreme Condition and High Winds.



A B SCAFFOLDING GI TUBE



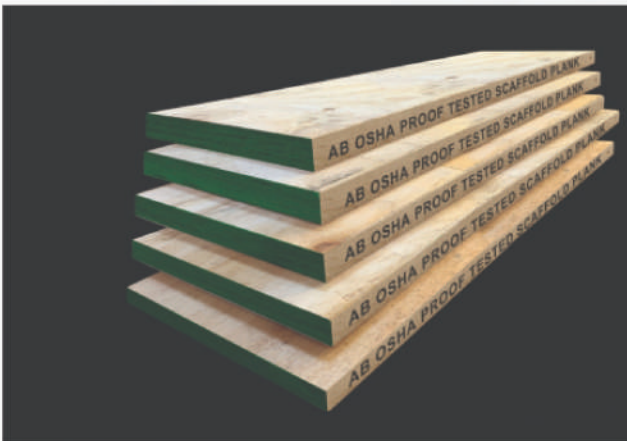
SCAFFOLDING TUBE

Scaffolding tube 48.3* 3.2 mm - EN/BS STANDARD

Scaffolding tube 48.3*4.0mm EN/BS STANDARD

AB Black tube 48.3*3.2mm

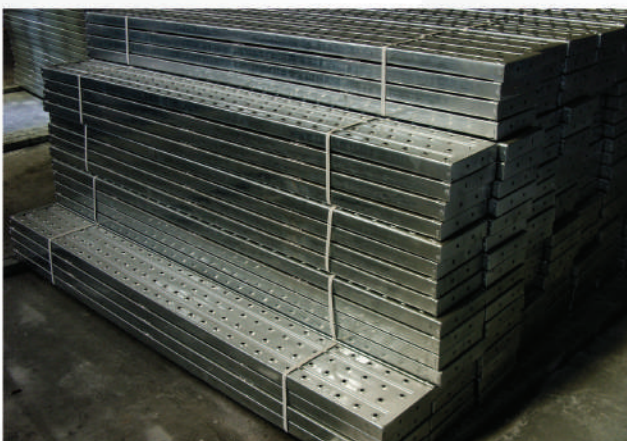
A B SCAFFOLDING LVL BOARD



OSHA BOARD

Each scaffold board is individually proof laminated and embossed with osha proof scaffolding plank is in 225 × 38mm, Customized Size are available

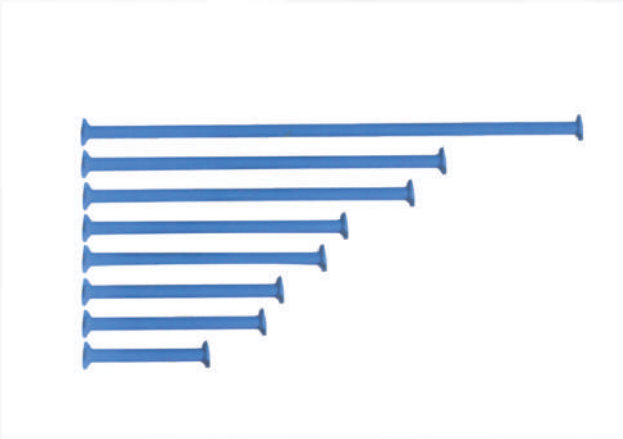
SCAFFOLDING STEEL PLANK



METAL BOARD

Steel Scaffold boards conforming to BS/EN STANDARD. Metal Boards are made with Pre- Galvanized Steel and without hooks resulting in fast and easy erection using board retaining clamps. Available in all regular sizes.

A B CUPLOCK SYSTEMS



CUPLOCK LEDGER

The Ledgers are available in various size to suite client needs, depending on loading factors in support and wide range access requirement.

Specifications :

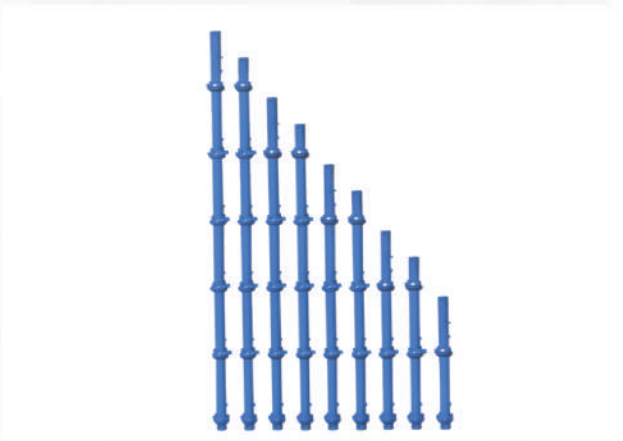
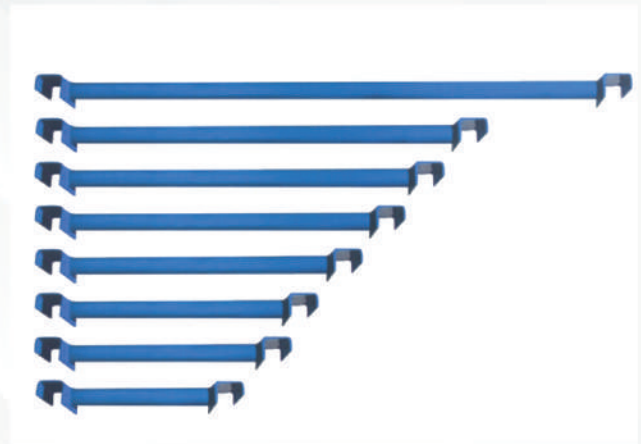
Cup lock Ledger 2.5 mtr, 2.0 mtr, 1.8 mtr, 1.6mtr, 1.3 mtr, 1.2 mtr, 1.0 mtr, 0.9 mtr, 0.6 mtr.

TRANSOM

Intermediate transoms is used to provide a intermediate support where the distance between standards of a grid (bay) exceed the maximum permitted span of scaffold boards.

Specifications :

Transom 2.5 mtr, 1.8 mtr, 1.6 mtr, 1.3 mtr, 1.2 mtr, 1.0 mtr, 0.9 mtr, 0.6 mtr.



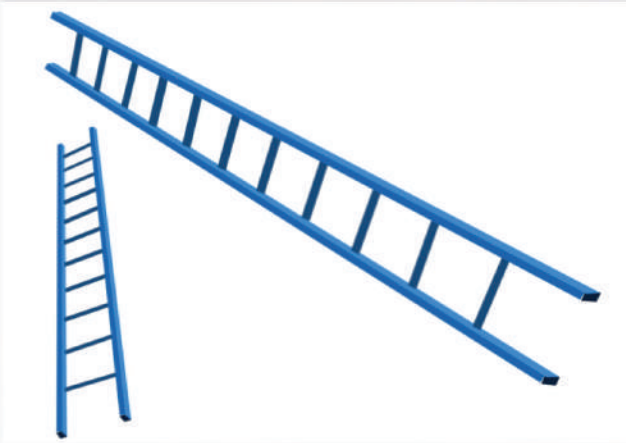
CUPLOCK STANDARD

The captive mobile upper cups are made of malleable casting to endure rough site handling and welded bottom cups are pressed from deep drawn steel. The access standard are provided with integral spigot 150mm long at the top of each standards for making vertical connections.

Specifications :

Cup Lock Standard 3.0 mtr, 2.5 mtr, 2.0 mtr, 1.5 mtr, 1.0 mtr.

A B SCAFFOLDING LADDER



STEEL LADDER

Steel ladders are of modular design with circular rungs. IMS Steel ladders are available in 2,3,4 & 6 Metars. Length as standards, Non - standards are fitted with hooks for easy fixing. Steel Ladders have additional features, such as anti slip grooved rungs, anti slip rubber end caps and are light in weight too

ALUMINIUM LADDERS

Aluminium Ladders used in Roofing Construction, Access Scaffold Tower, Stair Scaffold Etc by Its Light Weight, Approved High Quality According to Europe and British Standard.



BEAM LADDER

Ladder Beam are used where Clean Span is required in Scaffolding or where greater strength is required in the horizontal members. conforming to BS/EN STANDARD

FORM WORK MATERIAL

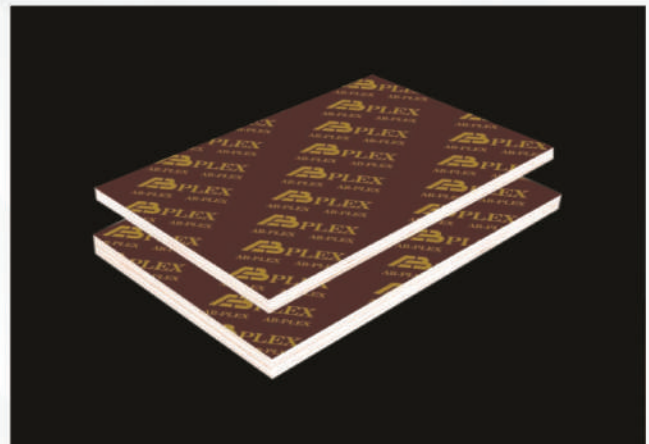


ALUMINIUM BEAM

Formwork Concrete Slab Aluminum Beam is in all Size as Main Beam and Secondary Beam with or without Hard Wood Insert.

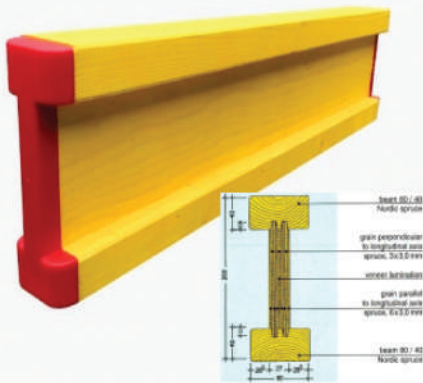
A B FILM FACED PLYWOOD

Standardize size of the film faced plywood is 1220 x 2440mm. Customized Size is available.



CARBON BEAM

H beam section is often used for large buildings such as factories, high - rise building, etc.) and Bridges, ships, lifting transportation machinery, equipment foundation, support.

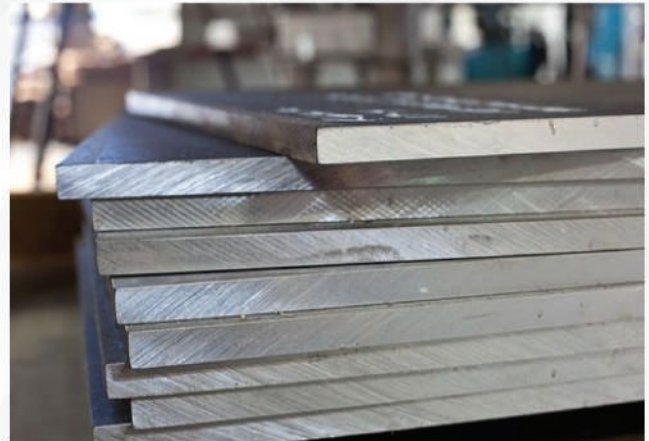


WOODEN BEAM

Construction Formwork H20 Beam in Standard Size of 200mm Height is a Type of Plywood Formwork Timber Beams Used in Doka Formwork System and Peri Form As Waller Beam and Concrete Slab I Beam for Slab Formwork System, Column Formwork System, Wall Formwork System and Beam Formwork.

STEEL PLATE

Used for making mold bottoms, plastic mold, normal machinery parts and so on.



TIMBER WOOD

Timber is a natural material used in many forms for building and construction... All Standard size Available

SINGLE WIDTH MOBILE SCAFFOLD TOWER

SINGLE WIDTH SCAFFOLD

The international mobile scaffold tower for conditions where narrowness prevails. The adjustable outriggers allow for multiple adaptations. When fully extracted the outriggers provide conditions in extended heights. When retracted, the tower can easily be moved through alley, doorways etc, or be used for wall side applications

Available Sizes :

Width: 0.80 meter

Length: 1.80 meter

Total Height: 2.0m, 3.0m, 4.0m, 5.0m, 6.0m, 7.0m, 8.0m, 9.0m.



DOUBLE WIDTH MOBILE SCAFFOLD TOWER

DOUBLE WIDTH SCAFFOLD

Our aluminium tower offer an solution for those hand to reach places that requires safe and convenient access. Simply and easy to erecting to the lightness of aluminium our frames and accessories are durable, low-maintenance and mobile giving you the versatility to relocate or adjust. This main frame is design for those people who need a ladder in the main frame.

Available Sizes :

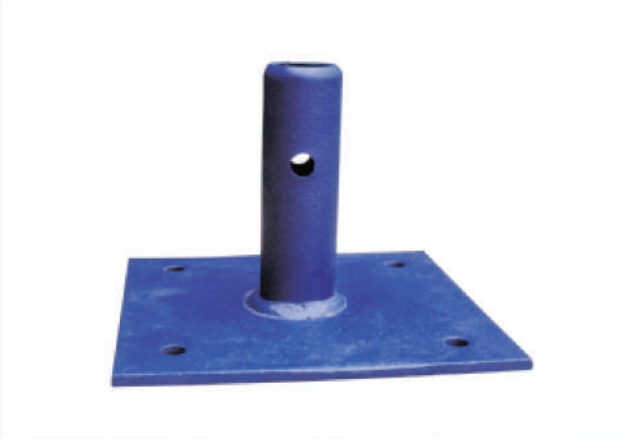
Width : 1.45 meter

Length : 2.45 meter

Total Height : 2.0m, 3.0m, 4.0m, 5.0m, 6.0m, 7.0m, 8.0m, 9.0m, 10.0m, 11.0m, 12.0m, 13.0m, 14.0m, 15.0m, 16.0m, 17.0m, 18.0m, 19.0m, 20.0m.



AL BATIN OTHER MATERIAL



BASE PLATE

There are Spigot Base Plate and Socket Base Plate. Spigot Base Plate is used to be Inserted into the bottom end of the Scaffold Pole(Standards). Socket Base Plate issued to as Socket of Universal Jacks, Scaffold Poles. Base Plate is Mainly Used to Spread The Load Onto The Sole Plates.

U HEAD OR SCREW JACK

The adjustable fork Head or Screw Jack can be connected at the top of the standards and has a U head on top to support primary and secondary aluminum beams or decking beams for form work.



UNIVERSAL JACK

Universal Jack size and specification are customized in height, diameters, efficient adjustable height, with or without socket tube etc.

ROCKING OR SWIVEL BASE PLATE

Rocking Base used for Scaffolding for spreading the Gravity Loads conforming to EN 74 AND BS 1139



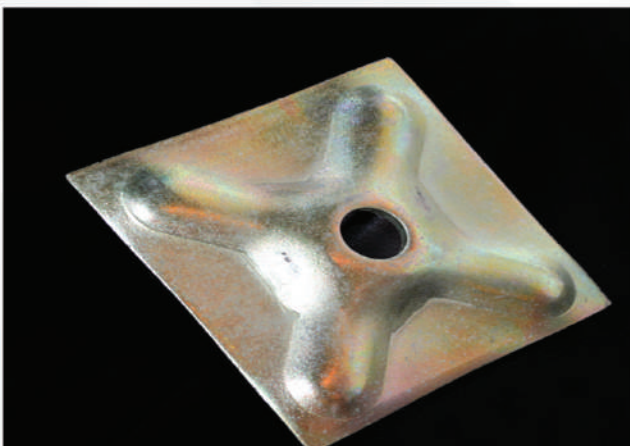


BASE JACK

The adjustable base jack can be used as an alternative to universal jack and socket base.

SPIGOT

Spigots are used on the top of a Standard to create an end to end connection with another standard.



ANCHOR PLATE

The Anchor plate is of robust construction, suitable for use in conjunction with a tie rod and wing nut.

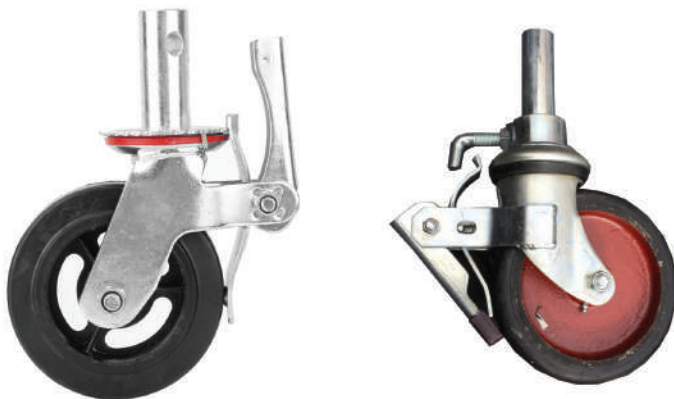


WATER STOPPER

Water Barrier is used for stopping the flow of water. These products find application in various types of pipe fittings as well. Owing to their dimensional accuracy, water stopper provides precise and tight fitting without any fear of leakage

TIE ROD

This tie is a through tie system, in which the bar passes right through the wall formwork. Counter plates, cones and the tube assembly



CASTOR WHEEL

Provide movements to the cuplock towers from different places.



JOINT PIN

Pressed Steel Type Scaffolding Inner Joint Pin is BS1139 Scaffolding Pipe Fittings. It is used to connect scaffold tube in OD48.3mm End to End from Internal.

WING NUT

We are engaged in providing a wide range of Scaffolding Wing Nut to our valuable clients.



PUSH PULL PROPS

Push and Pull Props could be designed in different adjustable range according to construction and formwork requirement. Painted and Galvanized Push and Pull Are Available as Request

OTHER MATERIALS

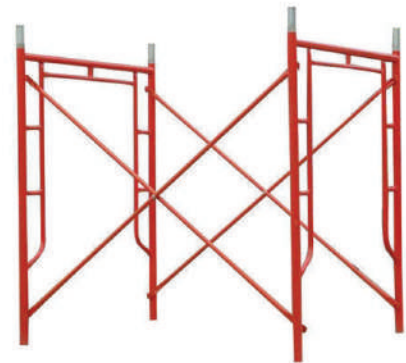


CANTILEVER FRAME

Scaffolding Cantilever frame system support the formwork beyond the external periphery of the slab. These cantilever frames have blade ends for locating in the cup joint and accept adjustable jacks in three positions of 1.2m, 1.25m and 1.3m. Moreover, these are engineered to support normal access loads and stop-end forms.

KOREAN FRAME

Korean Frames are most popular light duty scaffolding frames used in construction work and maintenance work. Korean frames are available in various sizes and standards and also available on the specifications mentioned by clients.



SWING GATE

Scaffolding Swing Gate is a safety gate for access scaffolding modular system. Swing Gate and Safety gate is made by high strength steel scaffold tube with forged half swivel scaffold coupler. Swing safety gate is

STEEL STRAPING ROLE

Material: Mild steel
Ideal for packaging purpose



SCAFFOLDING TOOLS



LADDER RUBBER BUSH



T BOLT NUT AND WASHER



BOX SPANNER



BRASS HAMMER



NORMAL HAMMER



STEEL STRAPER HANDLING



STEEL STRAPING MACHINE



SPIRIT LEVEL



HARNNESS



RATCHET SPANNER



TAG HOLDER



PVC CONE



SAFETY TOOL BELT



STEEL STRAPING CLIPS



SCAFFOLDING LIFTING BUCKET

Certificate of Registration

This document certifies that the
Quality Management System of:

AL BATIN ADVANCED CONTRACTING CO. LTD.

Location: Jubail, Saudi Arabia.

Have been assessed and approved by
IQS Standards Audits Division

In accordance with the following standard:

ISO 9001:2015

The registered scope of the assessed quality management system is as follows:

Rental Scaffolding , Sales Scaffolding, Service Provider , Equipment Rental,
Scaffolding Erection

Current Certificate Date:
25th March 2020

Certificate Expiry Date:
24th March 2021

Registration Number: KSA450760

Issue: 03

For and on behalf of
IQS Standards Division



Signed.....*[Signature]*.....
KSA450760

This is an accredited certificate issued under the auspices of ASCB the summary details of
which are listed in the International Register of Quality Assessed Organizations and at
www.iqsaudits.com/certificate-authenticity

Interested parties should check the validity of this certificate by going to the address shown above or
using the QR Code and entering this certificate number in the space provided and click on SUBMIT

This certificate remains the property of, and must be returned to IQS Standards Division upon reasonable request

IQS Cert Doc Ref: C155 Rev: 05/17 Ed: 08 Page: 1 of: 1

SCAFFOLDING

Follow us on



سقالات الباطن
Al Batin Scaffolding
Sale | Rental | Erection



س.ت ٢٠٥٥٠٢٢٦٧٩ - تلفون: ٠١٣٣٦٧٠٢٦٥ - ص.ب ٣٦٢-الجبيل ٣١٩٥١ - المملكة العربية السعودية

C.R. 2055022689 - Tel : 013 367 0265 P.O. Box 362 Al - 31951, Kingdom of Saudi Arabia

www.albatinindus.com | info@albatinindus.com

